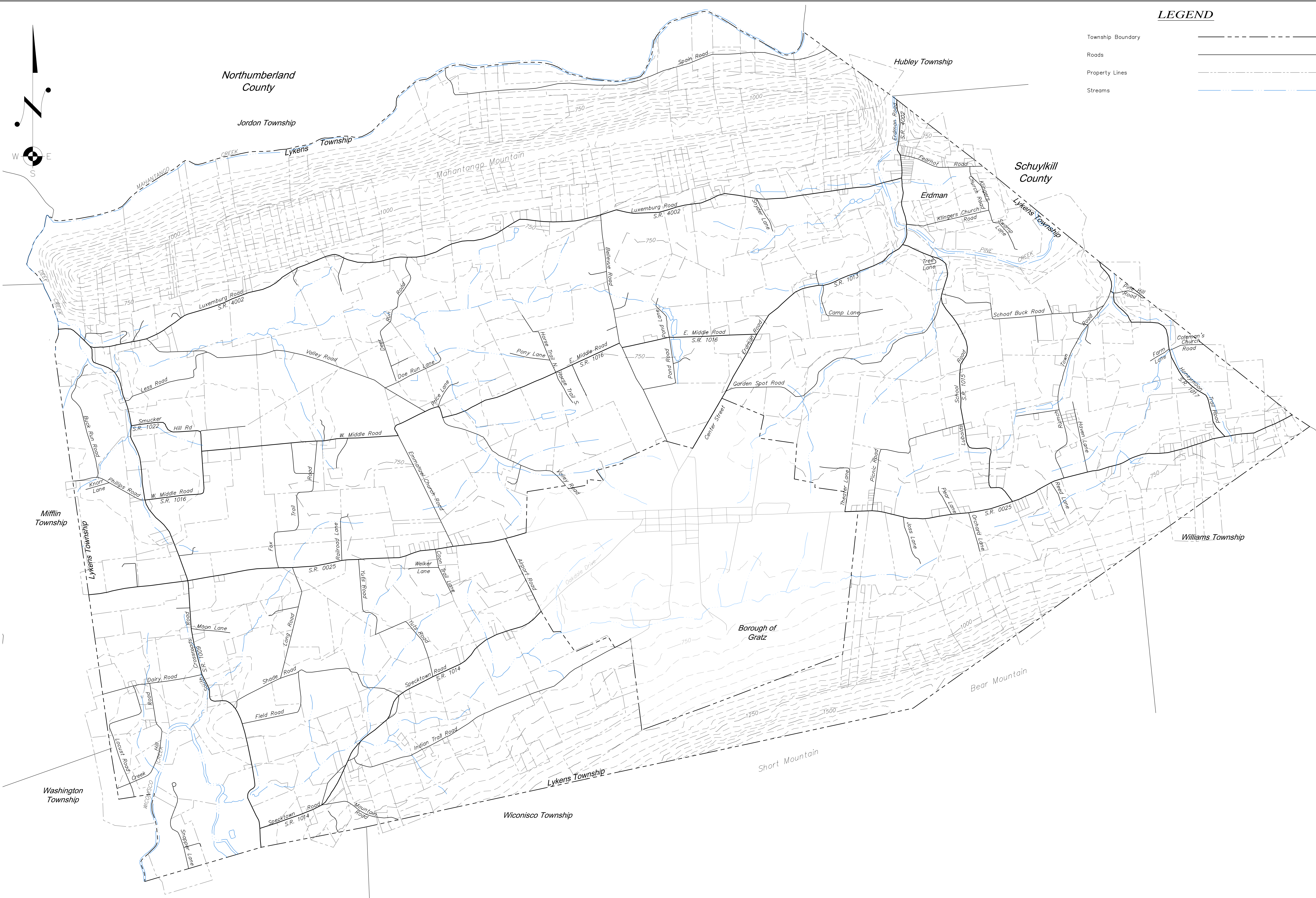


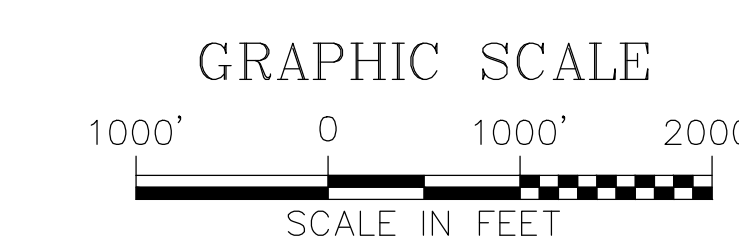
LEGEND

- Township Boundary
- Roads
- Property Lines
- Streams



NOTES:

1. ORIGINAL MAPPING AT SCALE OF 1" = 3000', PREPARED BY WHITNEY, BAILEY, COX, & MAGNANI, L.L.P., DATED JANUARY 28, 2000.
2. MAPPING SCALE REVISED TO 1" = 1000', AND ROAD NAMES AND PLAN LABELS ADDED BY RAUDENBUSH ENGINEERING, INC., DATED JUNE 2012.



MAP NO. 1

SITE MAP
LYKENS TOWNSHIP ACT 537-SEWAGE FACILITIES PLAN
 <small> 275 South Union Street Millersville, Pennsylvania 17057 Phone: 717-564-0821 Fax: 717-564-0112 www.raudenbush.com </small>