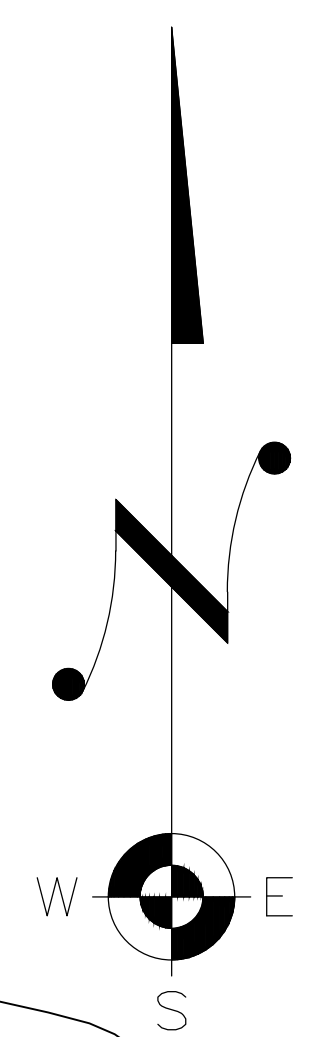
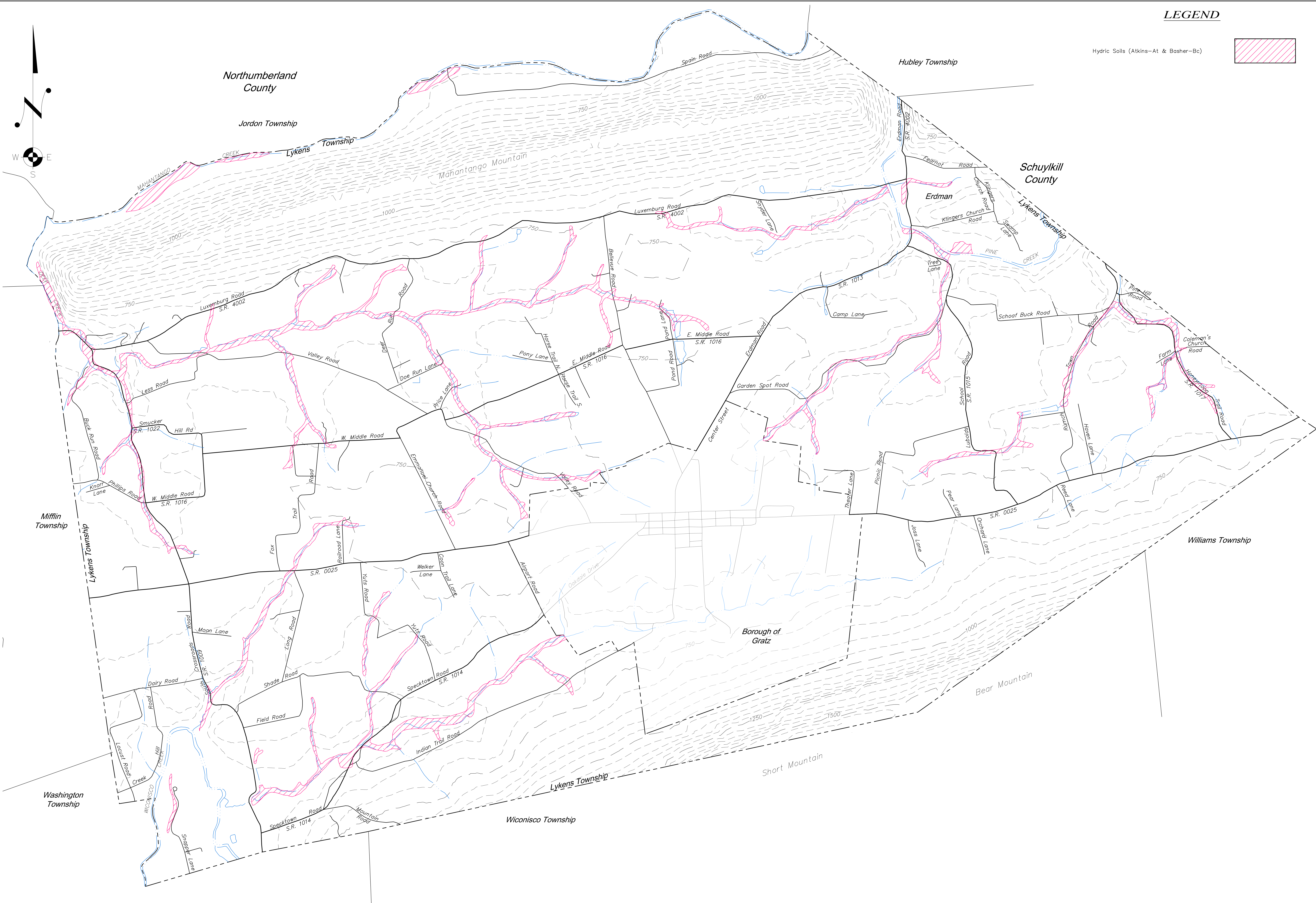
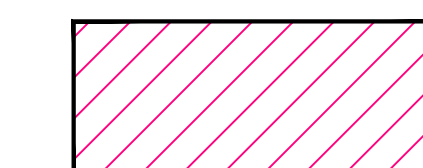
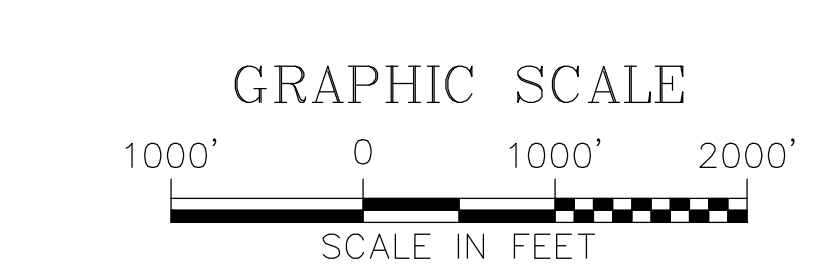


LEGEND

Hydric Soils (Atkins-At & Basher-Bc)



- NOTES:**
1. ORIGINAL MAPPING AT SCALE OF 1" = 3000', PREPARED BY WHITNEY, BAILEY, COX, & MAGNANI, L.L.P., DATED JANUARY 28, 2000.
 2. MAPPING SCALE REVISED TO 1" = 1000', AND ROAD NAMES AND PLAN LABELS ADDED BY RAUDENBUSH ENGINEERING, INC., DATED JUNE 2012.



MAP NO. 12

HYDRIC SOILS MAP

LYKENS TOWNSHIP
ACT 537-SEWAGE FACILITIES PLAN

RAUDENBUSH ENGINEERING, INC.
275 South Union Street
Middletown, Pennsylvania 17057
Phone: (717) 944-0823
Fax: (717) 944-0112
www.raudenbush.com