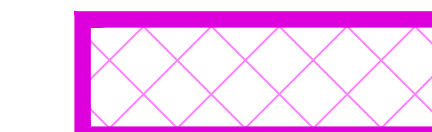
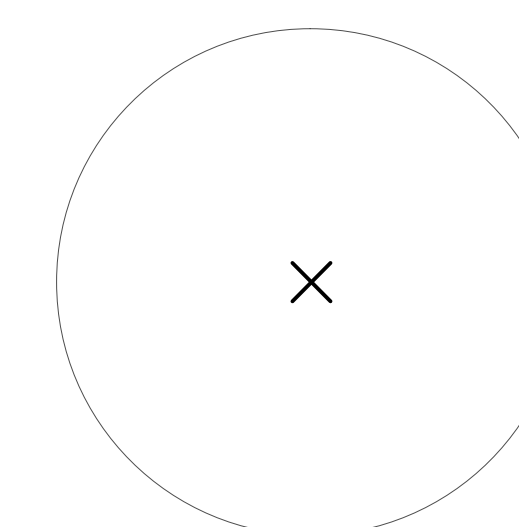


LEGEND

Area Of Required Preliminary Hydrogeologic Study For Proposed On-Site Sewage Disposal Systems

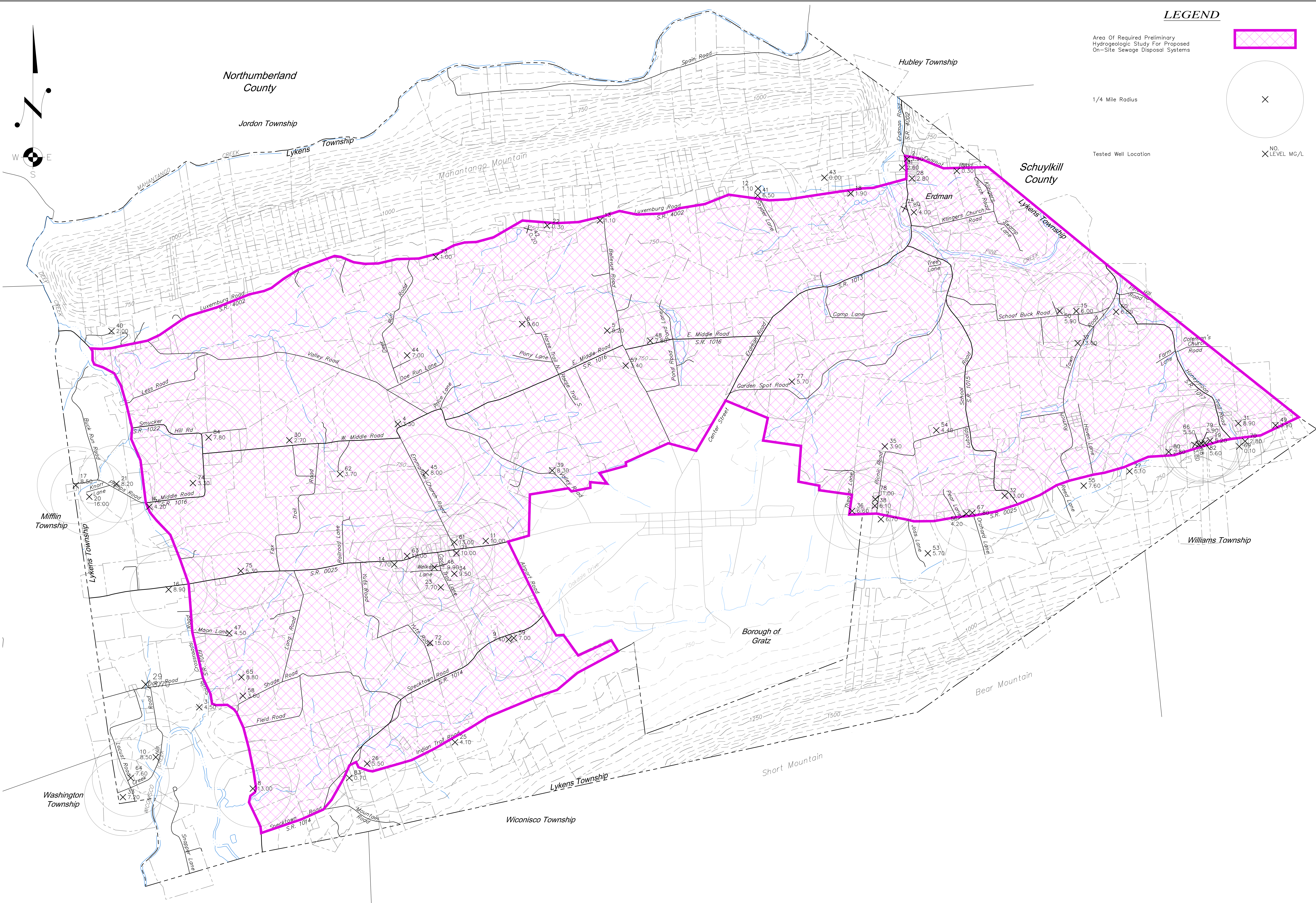


1/4 Mile Radius

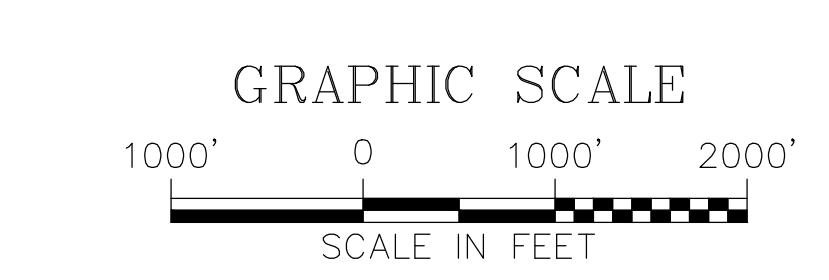


Tested Well Location

NO. LEVEL MG/L



- NOTES:**
1. ORIGINAL MAPPING AT SCALE OF 1" = 3000', PREPARED BY WHITNEY, BAILEY, COX, & MAGNANI, L.L.P., DATED JANUARY 28, 2000.
 2. MAPPING SCALE REVISED TO 1" = 1000', AND ROAD AND PLAN LABELS NAMES ADDED BY RAUDENBUSH ENGINEERING, INC., DATED JUNE 2012.
 3. AREAS FOR NITRATE-NITROGEN CONCENTRATION WERE INTERPOLATED FROM 82 SAMPLES TAKEN IN THE TOWNSHIP. RANGES FOR NITRATE-NITROGEN FOR AREAS DOES NOT NECESSARILY INDICATE THAT AN INDIVIDUAL WELL WILL HAVE NITRATE-NITROGEN IN THAT RESPECTIVE RANGE.
 4. FOR PROPOSED ON-SITE DISPOSAL SYSTEMS NOT WITHIN THE "REQUIRED STUDY AREA, PRELIMINARY HYDROGEOLOGIC STUDIES ARE REQUIRED FOR PROPOSED ON-SITE SYSTEMS WITHIN 1/4 MILE OF WELLS THAT HAVE EXHIBITED NITRATE-NITROGEN LEVELS IN EXCESS OF 5 MG/L.



MAP NO. 9

NITRATE-NITROGEN MAP

LYKENS TOWNSHIP
ACT 537-SEWAGE FACILITIES PLAN

RAUDENBUSH ENGINEERING, INC.
275 South Union Street
Middletown, Pennsylvania 17057
Phone: (717) 944-0823
Fax: (717) 944-0112
www.raudenbush.com